

LUMAX

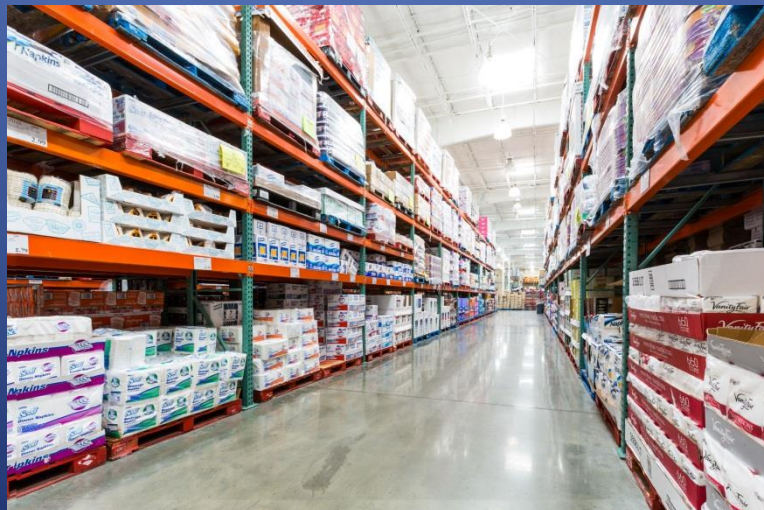
LIGHTING

HBC LED Cloud

High Bay/Low Bay Luminaire



- *Use where the very highest efficacy is desired or required.*
- *Ideal for big box stores, supermarkets, warehouses, factories, and retail spaces with high mounting requirements. Up light prevents dark, cavernous ceilings.*
- *For commercial or industrial spaces where an enclosed, lensed luminaire is needed or preferred.*
- *Ultralight high bay/low bay luminaire allows for quick and easy installation.*



Getting Light Right Up, Down and All Around

HBC LED Cloud brings comfortable omni - directional light to your large interior commercial, retail or industrial environment.



- *Ultra-Light weight luminaire constructed with aluminum housing and Made in USA for an excellent sustainable LED lighting solution.*
- *Translucent end caps allows light transmission for added luminance .*
- *Superior thermal management system helps provide ultralight fixture weight. (10 lbs. - 4' fixture; 4 lbs. - 2' fixture)*
- *Exclusive , high performance, convex shaped soft/flexible polycarbonate diffuser . Formulated to reduce hot spots and glare while eliminating LED pixilation imaging , provides extra ordinary light transmission and even light distribution. Patent pending design. DLC Listed.*

*Lumax Delivers Lumens With Maximum Efficacy
HBC LED Cloud Luminaire*



www.lumaxlighting.com



JOB _____

TYPE _____

CATALOG # _____



APPLICATION

- ULTRALIGHT FIXTURE WEIGHT ALLOWS FOR QUICK AND EASY INSTALLATION.
- USE WHERE VERY HIGH EFFICIENCY IS DESIRED OR REQUIRED.
- USE IN COMMERCIAL OR INDUSTRIAL SPACES WHERE AN UP-LIGHT COMPONENT AND A LENSED LUMINAIRE IS NEEDED OR DESIRED.
- USE IN BIG BOX STORES, SUPERMARKETS, WAREHOUSES, FACTORIES, AND RETAIL SPACES.

CONSTRUCTION

- LIGHTWEIGHT ALUMINUM HOUSING.
- PROPRIETARY INJECTION MOLDED END CAPS.
- TRANSLUCENT END CAPS FOR ADDED LUMINANCE.
- SUPERIOR THERMAL MANAGEMENT SYSTEM PROVIDING ULTRALIGHT FIXTURE WEIGHT.
(10 LBS - 4' FIXTURE; 4 LBS - 2' FIXTURE)
- HIGH PERFORMANCE SOFT/FLEXIBLE DIFFUSER FORMULATED TO REDUCE HOT SPOTS AND GLARE WITH EXTRAORDINARY LIGHT TRANSMISSION AND EVEN LIGHT DISTRIBUTION.
- MADE IN USA

FINISH

- ALL EXPOSED METAL PARTS PRETREATED WITH A PHOSPHATE BONDING PROCESS AND POST-PAINTED WITH AN ELECTROSTATICALLY APPLIED HIGH TEMPERATURE BAKED WHITE ENAMEL FOR SUPERIOR QUALITY AND DURABILITY.

ELECTRICAL

- LISTED LISTED
 - IBEW LABELED
 - L70 AT 45C AMBIENT PROJECTED AT 154,000 HOURS.
 - DIMMING IS OPTIONAL. SEE "OPTIONS" IN "ORDERING GUIDE" BELOW
- CERTAIN VERSIONS DLC QUALIFIED. CHECK WWW.DESIGNLIGHTS.ORG FOR LIST OF SPECIFIC QUALIFIED CONFIGURATIONS UNDER THE "QUALIFIED PRODUCTS LIST" TAB.**

Warranty

- 5 YEAR LIMITED WARRANTY ON LED BOARDS & DRIVERS.

HBC LED Series



LED High Bay CLOUD



ORDERING GUIDE EXAMPLE: HBCLED244L5K47-9FA

SERIES	LUMENS	KELVIN	FIX		
HBCLED	122L	3K, 35K,	25	**LUMENS: 122L = 12,200 RATED INITIAL FIXTURE LUMENS (100 WATTS) 244L = 24,400 RATED INITIAL FIXTURE LUMENS (195 WATTS) KELVIN: 3K = 3000 KELVIN 35K = 3500 KELVIN 4K = 4000 KELVIN 5K = 5,000 KELVIN VOLTAGE: 9- 120-277 5-347V	LENS: FA - FROSTED ACRYLIC CA - CLEAR OPTIONS: DM1 - 0-10v DIMMING TO 1% (PURPLE AND GRAY WIRES INCLUDED) ACCESSORIES: Y - PADDLE CABLES (SEE PAGE 3 FOR ORDERING)
	244L	4K, 5K	47		
**NOTE: 1. LUMENS AND VOLTAGE BASED ON "FA" FROSTED ACRYLIC LENS OPTION & 5000K CCT					



LUMAX LIGHTING Chestnut Avenue & Fourth Street
 Altoona, PA 16603-0991 814-944-2537 Fax 814-944-6413
www.lumaxlighting.com





HBC LED Series

PHOTOMETRIC DATA

CATALOG NUMBER: HBCLED244L5K47-9FA

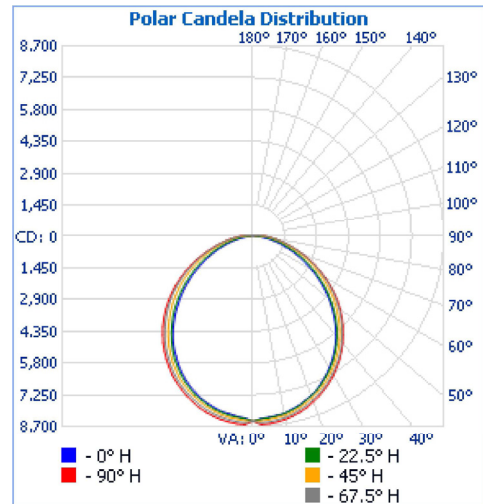
Zonal Lumen Summary

Zone	Lumens	% Luminaire
0-30	6,550.0	26.8%
0-40	10,689.4	43.8%
0-60	18,625.0	76.3%
60-90	5,199.6	21.3%
70-100	2,738.9	11.2%
90-120	475.5	1.9%
0-90	23,824.6	97.6%
90-180	592.6	2.4%
0-180	24,417.2	100%

Coefficients Of Utilization - Zonal Cavity Method

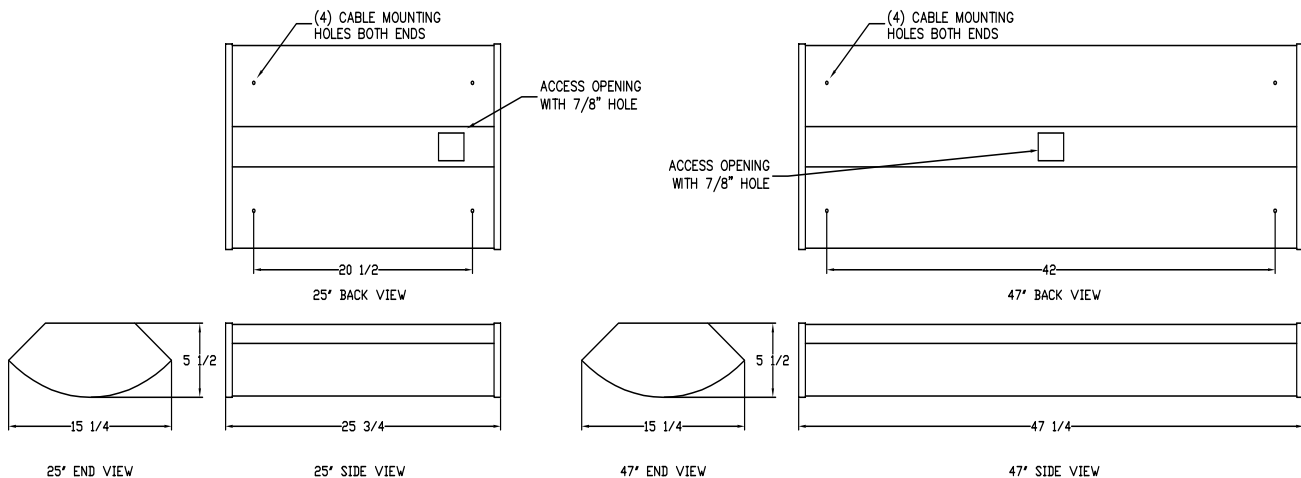
Effective Floor Cavity Reflectance: 20%

Cavity %:	80		70		50		30		10		0									
	70	50	30	0	70	50	30	0	50	30	20	50	30	20	50	30	20	50	30	20
RW %:	1.18	1.18	1.18	1.18	1.15	1.15	1.15	.98	1.10	1.10	1.10	1.05	1.05	1.05	1.00	1.00	1.00	.98		
RCR: 0	1.18	1.18	1.18	1.18	1.15	1.15	1.15	.98	1.10	1.10	1.10	1.05	1.05	1.05	1.00	1.00	1.00	.98		
1	1.08	1.03	.98	.94	1.05	1.00	.96	.82	.96	.92	.89	.91	.88	.86	.87	.85	.83	.81		
2	.98	.90	.83	.77	.95	.87	.81	.69	.83	.78	.73	.80	.75	.71	.76	.73	.69	.67		
3	.89	.79	.70	.64	.87	.77	.69	.58	.74	.67	.62	.70	.65	.60	.68	.63	.59	.57		
4	.82	.70	.61	.54	.79	.68	.60	.50	.65	.58	.53	.63	.57	.52	.60	.55	.51	.48		
5	.75	.62	.53	.47	.73	.61	.53	.44	.59	.51	.46	.56	.50	.45	.54	.49	.44	.42		
6	.69	.56	.47	.41	.67	.55	.47	.39	.53	.45	.40	.51	.44	.39	.49	.43	.39	.37		
7	.64	.51	.42	.36	.63	.50	.42	.34	.48	.41	.35	.47	.40	.35	.45	.39	.34	.32		
8	.60	.46	.38	.32	.58	.46	.38	.31	.44	.37	.32	.43	.36	.31	.41	.35	.31	.29		
9	.56	.43	.34	.29	.54	.42	.34	.28	.41	.33	.28	.39	.33	.28	.38	.32	.28	.26		
10	.53	.39	.31	.26	.51	.39	.31	.25	.38	.31	.26	.36	.30	.26	.35	.30	.25	.24		



DIMENSIONS

SPECIFICATIONS AND DIMENSIONAL DATA SUBJECT TO CHANGE WITHOUT NOTICE.



LUMAX LIGHTING®

CABLE MOUNT DATA

HIGH BAY Y HOOK & LOOP

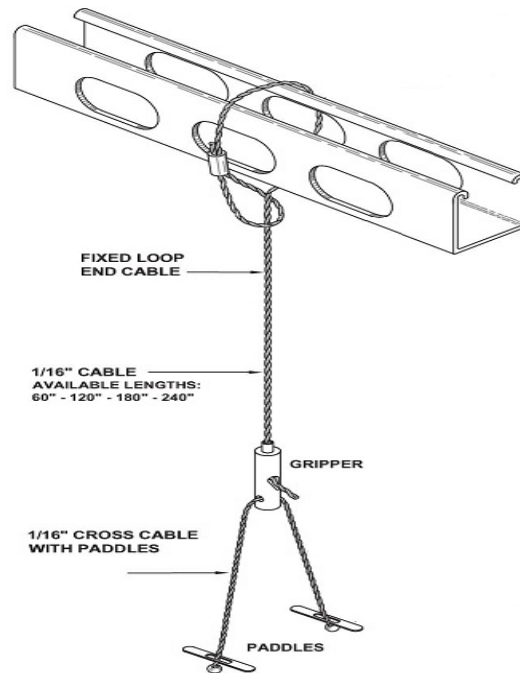
- HIGH BAY SUSPENSION KIT WITH 1/16" GALVANIZED CABLES WITH LOOP END CABLE TO LOOP OVER STRUCTURE.
- 75 LBS PER HANGER - 150 LBS PER TOTAL WITH 2-CABLES.
- KIT CONTAINS 2 PARTS OF EACH ITEM FOR TOTAL FIXTURE MOUNTING.

P/N 59989 - 60" MAIN CABLE W/LOOP END AND 12" Y CABLES W/ PADDLES

P/N 59315 - 120" MAIN CABLE W/LOOP END AND 12" Y CABLES W/ PADDLES

P/N 59990 - 180" MAIN CABLE W/LOOP END AND 12" Y CABLES W/ PADDLES

P/N 59991 - 240" MAIN CABLE W/LOOP END AND 12" Y CABLES W/ PADDLES



LUMAX LIGHTING Chestnut Avenue & Fourth Street
Altoona, PA 16603-0991 814-944-2537 Fax 814-944-6413
www.lumaxlighting.com



LUMAX LIGHTING
HBCLED.0516